



## The CAPVA Study Participant Information Sheet for Parents & Carers (summary version)

*Randomised Controlled Trial (RCT) of the Child and Adolescent to Parent Violence and Abuse (CAPVA) programme run by RISE Mutual CIC.*



### What is the study about?

You are being invited to take part in a study about child to parent violence and abuse (CAPVA) because you are a parent or carer of a child (aged 9-17) who is struggling with their feelings and behaviours. This study aims to understand what does and doesn't work, to help your family and other families in the future. It will do so by comparing a support programme provided by RISE Mutual CIC (RISE) with different types of support offered by your local authority. The research is led by the University of Hertfordshire (UH) and funded by the Youth Endowment Fund (YEF).

### If I'm interested, will I be able to take part?

When a family is referred to the study, a RISE practitioner will assess whether they are eligible to take part. Sometimes, families are not in a good place to take part in the study and may need different support. Or, parents or carers may not have time or interest for a support programme, and therefore the study. A practitioner will let you know if you are eligible or not.

### What if I do not want to take part?

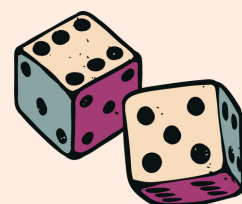
It is completely up to you whether you would like to take part in this study. Even if you do decide to take part, you can still choose to withdraw from the study or from the support that you're receiving, at any point. If you decide that you don't want to take part, then the lead professional working with your family will still work with you as they would normally.

If you are eligible and decide to take part you will be randomly allocated by computer to either of the study groups below. It's like a roll of a dice!

### RISE CAPVA group

Families allocated to this group will engage in up to 18 CAPVA programme sessions.

The sessions with parents and carers will teach Non-Violent Resistance (NVR) techniques to help change young people's behaviour in a respectful and calm way, avoiding punishments.



or

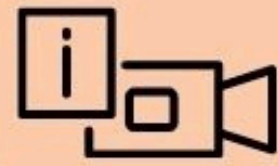
### Business as usual (BAU) group

In the BAU group, families will receive the support normally available in their area.

Families will at minimum continue to receive the support of a lead professional and a RISE Safety Sheet containing techniques to help support you.

But why will only half receive the programme? By having groups randomly selected to either attend the CAPVA programme or to receive the usual support, we will be able to see whether the CAPVA programme makes a difference to families. It is important to remember that those in BAU will be offered the support that families in your area would normally be getting.

# What will happen if I decide to take part in the study?



## 1. Receive information

A practitioner will share information on the study and complete a study referral form with you. You will be contacted if you are able to join the study.

If you are interested in joining, you will engage in two screening and suitability sessions. A RISE screening practitioner will explore what CAPVA is like in your home and family.

## 2. Engage in two sessions



## 3. Be asked to give consent

If eligible, and you want to continue, you will be asked to provide your consent to take part in the study. Before deciding, you will be told what usual support will be provided.

If you do consent to take part, you will be asked to complete the first survey. If you do not consent, your borough practitioner will support you as usual.

## 4. Following consent



## 5. First survey

The first survey asks questions about your child or the child in your care, their difficulties, strengths, characteristics and CAPVA behaviours. When the survey is finished, group allocation can begin.

A computer will randomly allocate you to the RISE CAPVA or business as usual study group. A RISE practitioner will contact you to let you know.

## 6. Random group allocation



## 7. Agreed support begins

The RISE CAPVA group will begin the sessions. The business as usual group will continue to be supported by their lead practitioner.

Several months after support begins, you will be invited to take part in an optional interview about your experiences. Some young people may be invited to take part in the research, too.

## 8. Optional interview



## 9. Final survey

The final survey happens about 9 months after the screening and suitability sessions. It will repeat some of the questions from the first survey to see what has changed.

### What are the possible risks of taking part?

Reflecting on violence and abuse may bring up some troubling emotions.

Your RISE or lead practitioner in your area will be your main support during this study, that will not change.

If you experience difficult situations during the study, a form will be available so you can tell the trial manager or safeguarding lead. Any risk of harm will be reviewed.

### What are the possible benefits of taking part?

You will contribute to much-needed research on what works to support families experiencing CAPVA.

Your information from this study will help improve and shape the support offered to other families.

Whichever group you are allocated to, you can positively impact other families.

### What will happen to my data?

Information will be collected on your family (also called personal data), such as your child's date of birth or your gender/ethnicity.

Under data protection laws, UH will be responsible for looking after your data and using it only for the purpose of carrying out the CAPVA study.

You will be allocated a unique study identification number. So, your name will not be linked to research data (e.g. from the surveys) or any results we publish. Data will be stored securely on the study database.

Once the study is complete, anonymised data will be stored for 10 years, which is needed for reporting and analysis. The data held at UH will then be securely and permanently deleted.

YEF would like to explore the long term impacts of the CAPVA study on young people. This is why we share study data with YEF, who archive the study data on the Office of National Statistics secure database.

Any study data that may identify you will be removed before being shared for archiving. Any identifying data about your child (e.g. name) will be safely passed to the Department for Education as part of archiving and exploring long-term impacts.

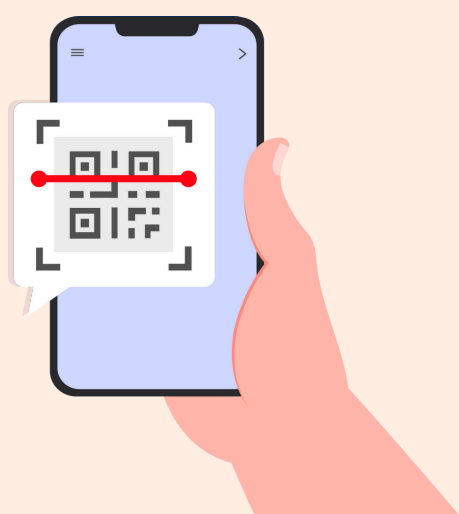
**!** For further information about happens to the data collected for the CAPVA study, how UH follow the Data Protection Act 2018 and UK GDPR, and on YEF archiving, can be found on the full version of this document (see below on how to find this).

## Who has reviewed this study?

Most university research in the UK is reviewed by an independent group of people, called a Research Ethics Committee. This committee is here to protect your interests. The CAPVA study has received ethical approval from the University of Hertfordshire Health, Science, Engineering and Technology Ethics Committee. The UH ethics protocol number is 0233-2025-Mar-HSET.



To visit the study webpage and view further information, please scan the code below or visit [www.go.herts.ac.uk/RISE-CAPVA-efficacy-study](http://www.go.herts.ac.uk/RISE-CAPVA-efficacy-study)



SCAN ME 



If you would like to contact a member of the study team, please email [CAPVAstudy@herts.ac.uk](mailto:CAPVAstudy@herts.ac.uk)



If you have any further questions and would like to speak to the trial manager, Dr Caroline Cresswell, please telephone 01707 286466 or email [c.cresswell@herts.ac.uk](mailto:c.cresswell@herts.ac.uk).